

SHENZHEN JOABOA TECHNOLOGY CO.,LTD

ADD: Floor 16th, NO.2 North Area, Excellence City Central Square, Meilin, Futian Dist., Shenzhen, Guangdong, China.
TEL:0755-36800118 400-888-6908
FAX: 0755-33052266
WEB:www.zhuobao.com
P.C.:518049

SHENZHEN JOABOA WATERPROOFING MATERIALS FACTORY

ADD: Pingkui Road, Jingui Community, Pingshan Street, Pingshan New Distrct, Shenzhen, China.
TEL:0755-84627839
FAX:0755-84627338
P.C.:518118

BEIJING JOABOA TECHNOLOGY CO.,LTD

ADD:NO.1Fengchan Road, Jigezhuang Village, Huoxian Town, Tongzhou District, Beijing, China.
TEL:010-80561601
FAX:010-80561601-800
P.C.:101112

SUZHOU JOABOA TECHNOLOGY CO.,LTD

ADD:Shuangta Bridge North, Qidu Town, Wujiang City, Jiangsu Province, China
TEL:0512-63828558
FAX:0512-63828705
P.C.:215234

WUHAN JOABOA TECHNOLOGY CO.,LTD

ADD:Jinyang Road, Yangluo economic Development District, Wuhan, China
TEL:027-51315555
FAX:027-51909799
P.C.:430415

CHENGDU JOABOA NEW BUILDING MATERIALS CO.,LTD

ADD:Choucheng Road, Huaikou Town, Jintang Country, Chengdu City, Sichuan Province, China
TEL:028-84150066
FAX:028-84150066
P.C.:610404



卓宝科技
JOABOA TECHNOLOGY

PVC JOABOA®
PVC Waterproof Membrane

JOABOA TECH China Pioneer of Waterproofing, Insulation & Decoration Integration

Ver. 20130522

PVC ^{JOABOA®} PVC Waterproof Membrane

Product Introduce

JOABOAPVC waterproof membrane is a kind of macromolecule materials with excellent properties, which consists of polyvinyl chloride resin mainly and various dedicated auxiliaries, anti-aging ingredient, produced by advanced equipment and technology. PVC features with strong tensile strength, high elongation, low shrinking rate, good low temperature flexibility, long lifetime, stable properties, reliable quality and convenient construction.

JOABOA PVC sorts three types based on product structure: homogenous membrane (H), fiber backing membrane (L), fabric reinforced membrane (P).

Product Feature

- 1.Strong tensile strength, high elongation, can fit big deformation of substrates.
- 2.Excellent anti-extreme weather property, can adapt to various environment temperature difference.
- 3.Suitable for exposed projects with long lifetime and good anti-aging property.
- 4.Can be welded firmly and reliably.
- 5.Outstanding root penetration resistance, best choice for planted roofs.
- 6.Simple and fast construction without pollution.
- 7.Great plasticity and fast treatment with corners and details.

Application Range



- 1.Steel structure roofs, exposed and unexposed concrete roofs, planted roofs.
- 2.Waterproof projects of basements, metros and tunnels.

Notes

- 1.To reach a great and long waterproof quality, it is recommended to use JOABOA customized system accessories and operate as JOABOA construction standards and technical regulation while application.
- 2.Different specification PVC should be piled separately while storage and transportation.
- 3.Avoid sun and rain, keep ventilate and far away from fire source.
- 4.Lifetime is one year since produced under normal storage and transportation.

Specifications

Membrane Sort	Code	Thickness (mm)	Width (mm)	Length (m)
Homogeneous	H	1.2、1.5、1.8、2.0	2000	20
Fiber backing	L	1.2、1.5、1.8、2.0	2000	20
Fabric reinforced	P	1.2、1.5、1.8、2.0	2000	20

Note: other specifications can be offered depended on agreements between buyers and supplier.

Property Index

Standards: GB 12952-2011

Item	Index		
	H	L	P
Resin layer thickness of center matrix	≥	-	0.40
Tensile property	Maximum tension/(N/cm)	≥	120
	Tensile strength/ MPa	≥	10.0
	Elongation with maximum tension/%	≥	-
	Elongation at break /%	≥	200
Dimensional change rate by heat treatment/ %	≤	2.0	1.0
Low temperature flexibility /°C	-25°C,no crack		
Water impermeability	0.3 MPa, impermeability within 120 min		
Impact resistance	0.5kg-m, impermeability		
Anti-static load	-	-	20kg, impermeability
Peel strength of lap seam/(N/mm)	≥	4.0 or membrane is damaged	
Tear strength of right angle/(N/mm)	≥	50	-
Tear strength of trapezoid/N	≥	-	150
Water absorption (70°C, 168h) / %	After immersion	≤	4.0
	After open assembly	≥	-0.40
Thermal ageing (80°C)	Time/h	672	
	Appearance	No bubble, crack, layering, adhesion and holes	
	Retention rate of maximum tension	≥	85
	Retention rate of tensile strength	≥	85
	Elongation retention rate with maximum tension/%	≥	-
	Elongation retention rate at break	≥	80
Chemical resistance	Low temperature flexibility	-20°C,no crack	
	Appearance	No bubble, crack, layering, adhesion and holes	
	Retention rate of maximum tension	≥	85
	Retention rate of tensile strength	≥	85
	Elongation retention rate with maximum tension/%	≥	-
	Elongation retention rate at break	≥	80
Artificial weathering	Time/h	1500 ^b	
	Appearance	No bubble, crack, layering, adhesion and holes	
	Retention rate of maximum tension	≥	85
	Retention rate of tensile strength	≥	85
	Elongation retention rate with maximum tension/%	≥	-
	Elongation retention rate at break	≥	80
Low temperature flexibility	-20°C,no crack		

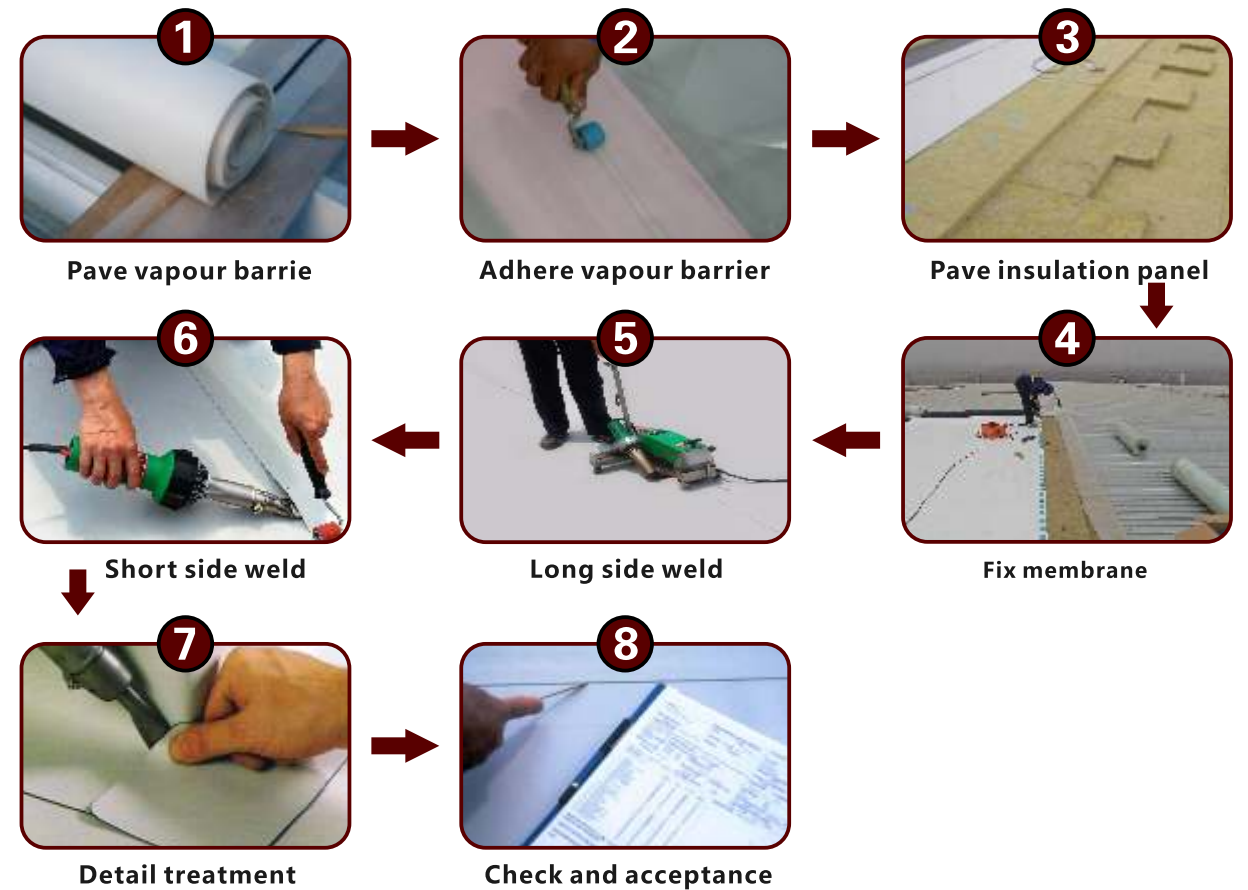
a. Anti-static load only be suitable to membranes used to press paving roofs;

b. Artificial weathering time of single membrane roofs is 4000h;

c. No need to test artificial weathering of un-exposed membranes.

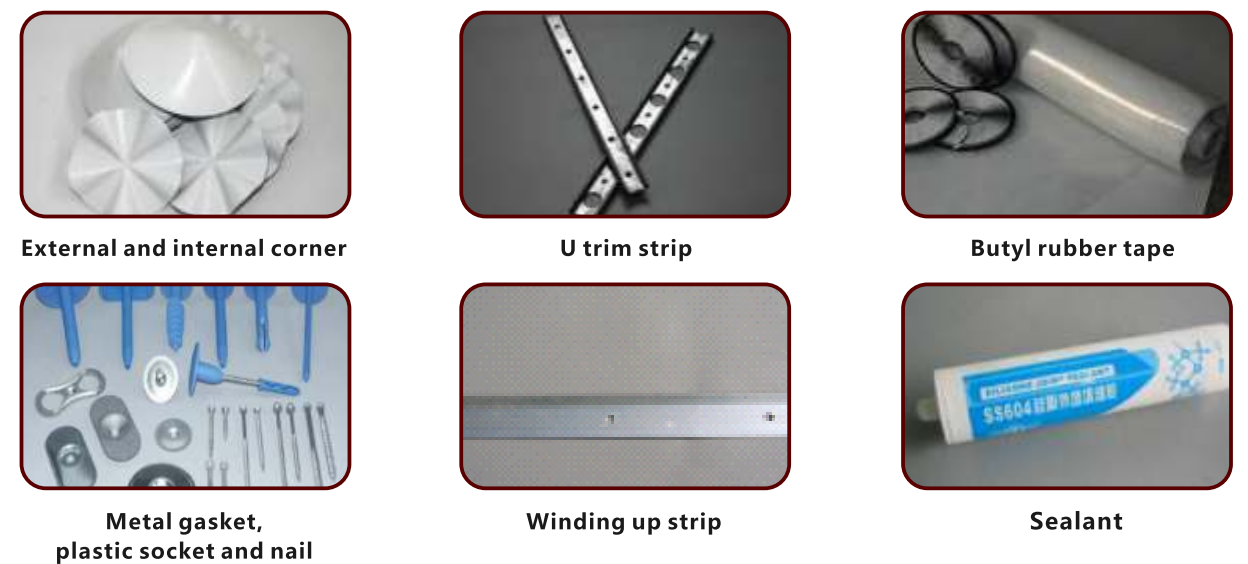
Construction Steps

Mechanical Fastening Method :



Note: boarder adhesion method and full adhesion method both are suitable for PVC.

System Accessories



Detail Treatment



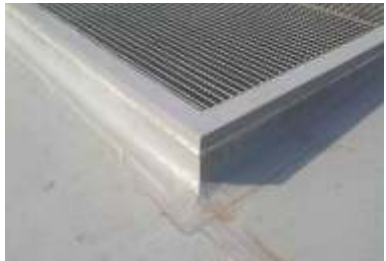
External corner treatment



Puncture component



Internal corner treatment



Roof skylight



Outside corner treatment

Operate equipment



Hand torch



Welder



Electric screw driver



Electric hammer



Sealant gun